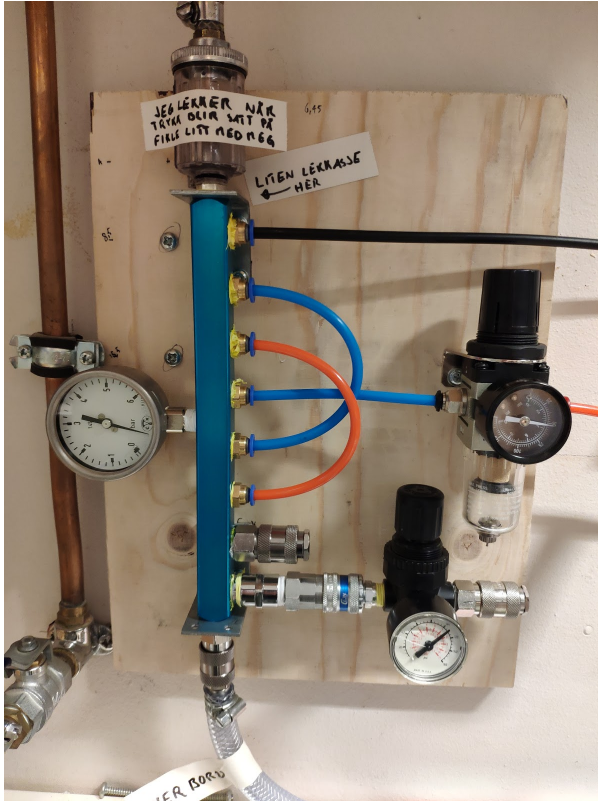


Pressurized air



The pneumatic hoses that are used are 6mm diameter

The NPT fittings in the manifold are TODO "

The quick fittings for the large hoses are of type 210/220, do not use 210/220 TODO: check which is correct 210 or 220

Errata

1. The oil filter at the top of the manifold is leaky when the pressure has been turned off, and is turned on again.
 - a. The workaround is to fiddle with it until it seats correctly and stops leaking. When pressurized and properly seated it does not leak.